



concept 2017

The Tableware Specialist



About Us

Paragon Ceramic Industries Limited (PCL) was registered on 12 June 2008 in Bangladesh, with commercial production in end of 2010. PCL Factory is located in Mirzapur, Gazipur Area, about 50 Km from the Capital Dhaka City, where all the infrastructural facilities are available. Total Investment in the Company is over US\$ 15 Million.

PCL is the manufacturer and exporter of High Definition Porcelain Tableware from Bangladesh, equipped with the most modern state-of-the-art and latest machinery from SKK, TAKASAGO, Japan, TCK, Taiwan and Modena, China, having more than 1,600 highly skilled and motivated employees.

Machinery's and Kilns at Paragon

- 13 Ball Mills.
- 9 Double Head Rollers.
- 1 Ram Press
- 2 Auto Cup making Machine
- 1 Biscuit Kiln - 16 MT / Day (900° C)
- 1 Glost Kiln - 12 MT / Day (1325° C)
- 3 Shuttle kiln - 3 MT / Day (1200° to 1400° C)
- 2 Decoration Kilns - (850° to 1220° C)
- 2 Decal Printing Machines.
- 1 Packaging Plant
- 2 High Pressure Casting Machines (3 Heads)

Paragon Ceramic is equipped with the top-of-the-Line Testing and Quality Control Laboratory facilities, and has at its disposal, own captive gas-based Power generation capability, own water supply through Deep Tube well, and medical and sanitary facilities PCL is one of the **MOST ENVIRONMENT-FRIENDLY** Tableware Plant in the Region. The factory is set up on about 10 Acres of land and has a total covered area of more than 20,000 sqm.

Some of the Environmental control points are as follows.

- State-of-the-art Effluent Treatment Plant (ETP).
- High efficiency production Machinerys to reduce overall Energy usage.
- Combined use of heat & power generation system to reduce gas consumption.
- Use of Solar Energy for upto 5 KW (Proposed).
- Raw Materials used without any Lead, Cadmium and Barium.
- Conserve rainwater and use inside the Factory.

Utilities at Paragon Ceramic

- 1.75 MW own Power Generation (2 Gas Based and 1 Diesel Based).
 - 240 Meters of Busbar Power Distribution.
 - 2600 Liters/Minute Water usage capacity from Deep Tube Well.
- Heat Recovery from GK and used in Dryers at the Plant to dry Greenwares.
17,500 M3 Gas used daily to run Biscuit, Glost, Decor Kilns and Generators.

Tableware Production Capacity: About 65,000 Pieces of world class Porcelain tableware is produced at PCL per day, which is about 22.00 Million pcs production per year, combining body formulation, forming, glazing, firing, decoration and decal printing procedure.

Porcelain Bodies: PCL can make 4 Bodies;

- Universal Porcelain which is normal White Porcelain
- Pearl Collection which is the Super White Porcelain
- Alumax which is Alumina Porcelain with about 30% AL2O3
- Ivory silk which is Fine China in cream color











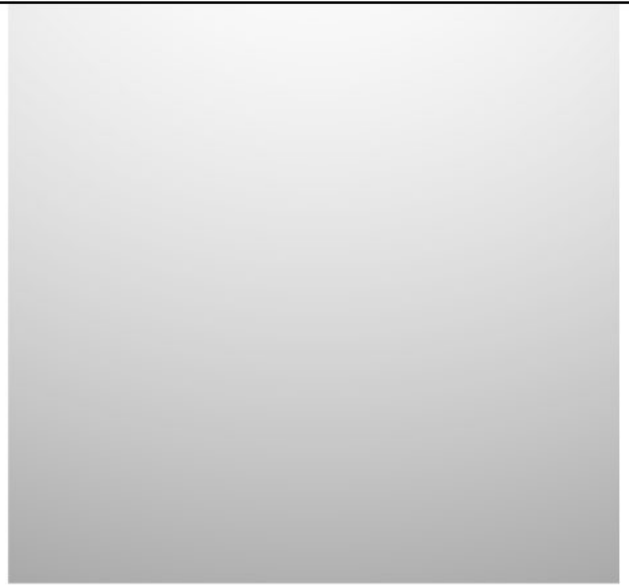








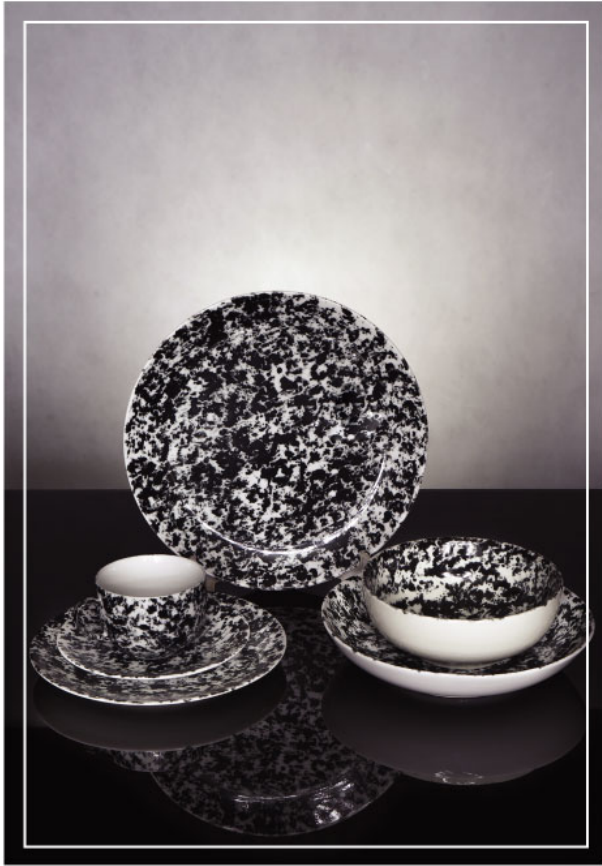














The Company is also capable of producing Mix n Match, which is any Colored Body and/or Colored Glaze, if the requirement is significant by the Customers.

Decal Plant and Design: PCL is presently producing about 90,000 sheets per month, starting from single color upto 16 Colors including Gold/Platinum, both On-glaze and In-glaze, and completely Lead, Cadmium and Barium Free.

Packaging Plant: Paragon Ceramic is producing about assorted 160,000 Pieces White and/or Brown Cartons per month, with additional capability to supply 4 Color Printed Cartons.

Product Variety and Range: PCL is capable of producing variety and wide range of Porcelain Tableware for Retail as well as Hotel (Service Industry), from Round Shape to Square Shape; offering currently about 90 Shapes and about 850 Designs in 2016. Most of the new Shapes in Porcelain can be developed and produced at the Plant within 8 to 10 weeks after receipt of the Formal Order. Starting from 5 Pcs Place setting to 20 Pcs Dinner Set and 95 Pcs Full Service Sets to variety of Gift Items, all customized range of High Quality Porcelain Table Top can be supplied by the Company.

Lead Time: Paragon Ceramic produce 1x40'FCL with 1 Shape and 4 to 6 Decors within 6 to 8 weeks time. Shipping lead time to Europe is about 5 weeks, Australia about 3 weeks and North America about 6 to 7 weeks. In case of Sea shipment Port of loading is Chittagong (275 Km from the Factory), and Shahjalal International Airport (30 Km from the Factory), Dhaka in case of Air shipment.

Payment Terms: Paragon Ceramic works with 100% Irrevocable Letter of Credit at Sight or 100% Advance TT before shipment.

In-house Quality Control:

The Company ensures highest standard of the Finished Products through State-of-the-art quality control Laboratory and Tests like

- Microwave and Dishwasher
- Resistance to Detergents
- Heavy metal release Testing
- Mechanical strength and so on...

Some of the Tests can also be done from BCSIR and BSTI. All Paragon products are approved by BSTI thru Registration Number BDS 485.

Exporting Countries: The Company exports its Porcelain Tableware to Italy, UK, USA, Greece, Romania, Turkey, Sweden, Norway, Germany, Brazil and India.

Future Plans of Paragon Ceramic: The Company plans to make expansion of its Porcelain Unit by 2017 by making the capacity double (total about 38.00 Million Pcs per year). Further, the Company plans to set up Bone China Unit in 2017 with production Capacity of about 3.00 Million pcs per year.

Paragon at a glance...

The Journey begins in 2010

Total investment USD 15 million

A work house of 1,600 People

Total turnover USD 15 Million per year

Total covered floor area 20,000 sqm and land 10 acres

Production capacity per month 1.8 Million Pcs

Only ceramic factory to achieve ISO 14001 in Bangladesh

& Progressing

Universal Porcelain . Pearl Collection . Alumax White . Ivory Silk
An ISO 9001 : 2008 and ISO 14001 : 2004 certified company

Contact Us

Head Office:

House # 32 (2nd Floor)
Road # 1/A, Block- J, Baridhara, Dhaka-1212
PABX+88-02-9857614, 9857626, 9857629
Fax: +88-02-9857605
info@paragonceramic.com

UK Office:

Paragon Ceramic (UK) Ltd.
Suite #6,105 Mayes Road
London N22 6UP
Tel: +44 208 888 4032
Cell: +44 (0) 7866 422 886,
ashzaman@paragonceramic.co.uk

PARAGON



PARAGON CERAMIC INDUSTRIES LTD.

House # 32 (2nd Floor), Road # 1/A, Block-J, Baridhara, Dhaka-1212
Tel: PABX +88-02-9857614, 9857626,9857629, Fax: +88-02-9857605
E-mail: info@paragonceramic.com